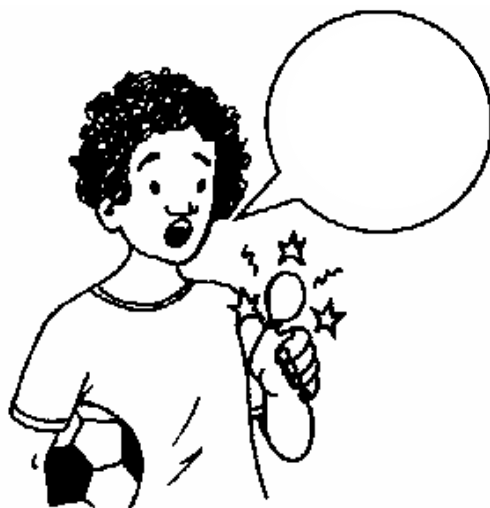
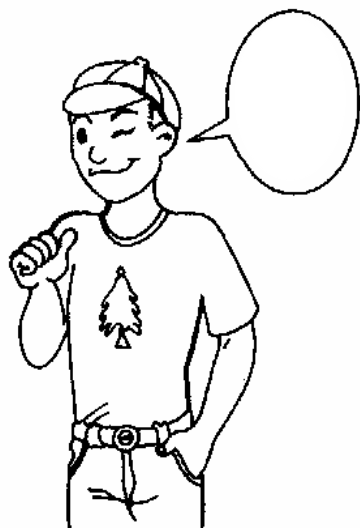


ficha de avaliação sumativa de língua portuguesa

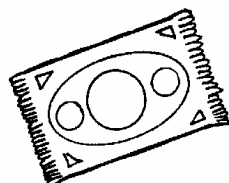
Data: _____ Avaliação: _____

Nome: _____

Completa os balões com o que os meninos dizem.



Liga os nomes aos desenhos



• pão •

• tapete •

• pé •

• popó •

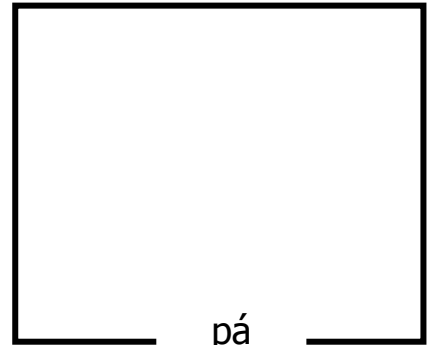
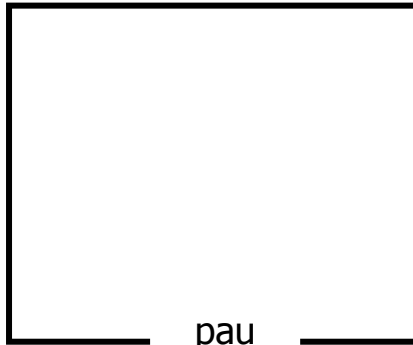
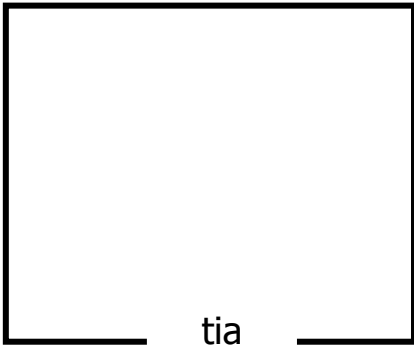
• pé

• pão

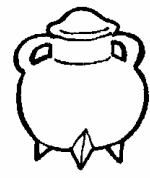
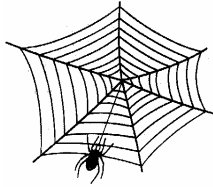
• popó

• tapete

Ilustra

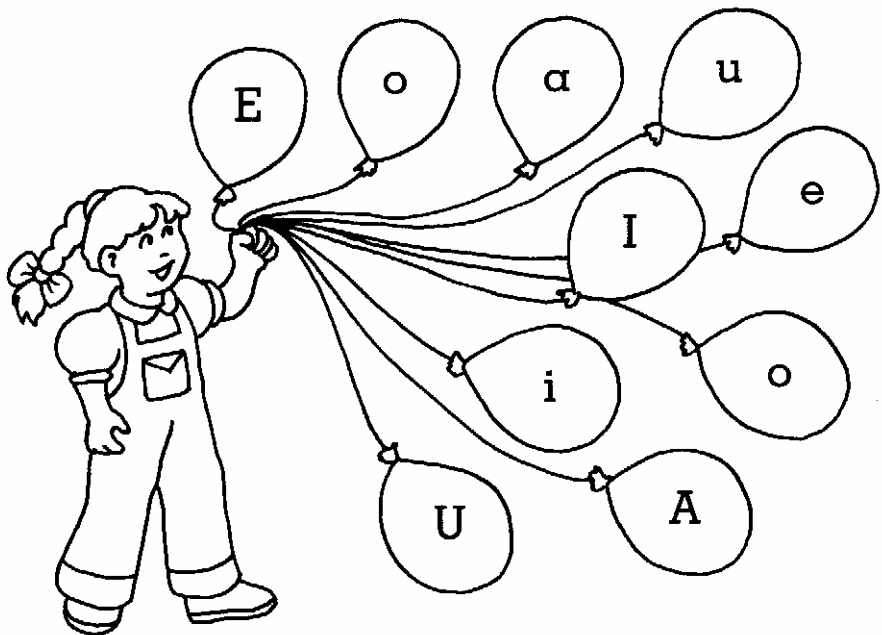


Legenda os desenhos



Pinta os balões de acordo com a chave.

- A - a → castanho
- E - e → amarelo
- I - i → lilás
- O - o → vermelho
- U - u → azul



Pinta os ditongos iguais da mesma cor

